

IMPORTANT – PUBLIC CONSULTATION

This is your opportunity to provide your views

Montpelier Road Healthy School Street



In September 2020, the council implemented the above-named Healthy School Street using an Experimental Traffic Management Order (ETMO) which became effective on 1 September 2020. An ETMO can only be valid for a maximum period of 18 months and as such the ETMO for this scheme expired on 1 March 2022. Installing schemes using an ETMO, allows both the council and public to appreciate and monitor the true effects of the experiment. Under normal circumstances, the council prior to the end of the 18-month experimental period would decide to either make the scheme permanent or remove it entirely, depending on the outcome of the experiment and how it has performed.

For the first 6 months from the date that the ETMO comes into effect, provision is made for those that are impacted by the experiment to submit objections to the council, which are then taken into consideration as part of the overall assessment on how the experiment has performed. For this Healthy School Street, the 6 month objection period ran from 1 September 2020 to 1 March 2021.

This experimental Healthy School Street scheme came into effect at a time when the country was battling with the COVID-19 pandemic and soon after its implementation, unfortunately a stringent lockdown was introduced in December 2020. The lockdown resulted in the closure of schools across England and in response the council took the decision to temporarily pause enforcement of all Healthy School Streets schemes from December 2020 through to March 2021. This decision was made on the basis, that it would be unreasonable for the council to continue to enforce the schemes, that are primarily installed to support the schools, which had to close.

As a result of infrastructure delays, school closures and the suspension of enforcement, the Healthy School Street scheme was not fully operational for a large part of the objection period for the ETMO. As a result, road users will not have experienced the true impact of the expired ETMO as it would be in 'business as usual' conditions. Whilst the public did engage in providing comments in relation to the scheme, the council does not consider it has been able to make a fair assessment on how the scheme performed for the full 18 months. For these reasons the Cabinet Member for Sustainable Croydon has taken a decision to reintroduce this Healthy School Street scheme under a new ETMO for a maximum period of 18 months, starting on **25 April 2022**. This will include a new 6 month objection period. The reintroduction now, would crucially allow the council, school and public to fully appreciate and monitor the impacts of the scheme in the absence of COVID-19 related restrictions.

The associated background report and decision notice in relation to this can be viewed by visiting www.croydon.gov.uk/decisionnotice.

The council would like to take this opportunity to thank all those who took part and responded to the previous inconclusive experiment. The responses you previously provided are highly valued and have been used to make minor improvements to the re-introduced scheme.

Feedback from those impacted by the previous experiment suggested that the scheme would benefit from an additional advance warning sign, which the council has agreed to install as part of the new experiment.

How will the trial Healthy School Street operate?

There will be no difference in how the previous scheme and the new Healthy School Street will operate. The Healthy School Street will be enforced through cameras between the hours of 8-9.30am & 2-4pm Monday to Friday during school term time only. As the scheme is not materially different from the former, previously valid exemptions/permits will continue to apply for the new scheme. Occupants of properties with entrances from/to the Healthy School Street zone will be eligible for an exemption permit – see plan included with this leaflet illustrating the School Street zone.

The council has agreed to provide permits/exemptions to a variety of road users who may need access to the street during the scheme operational hours, for example school staff. A full list of exemptions and the eligibility criteria has been published on our School Streets website and for any specific permit/exemption related queries please email: schoolstreets@croydon.gov.uk.

Healthy School Street launch & statutory consultation

The council has taken the decision to reintroduce the Healthy School Street under an ETMO effective from **25 April 2022** for a maximum period of 18 months.

The 6 month statutory consultation period will also start from **25 April 2022** and expire at **23:59 on 25 October 2022**. Please note that any previous objections made to the consultation which expired on 1 March 2021 will not be considered further as part of this new consultation.

How do I get involved?

Objections to the new experimental scheme can be submitted from **25 April 2022 to 23:59 on 25 October 2022** quoting reference **MONTPELIER/2022**

You can submit your objection via the following methods:

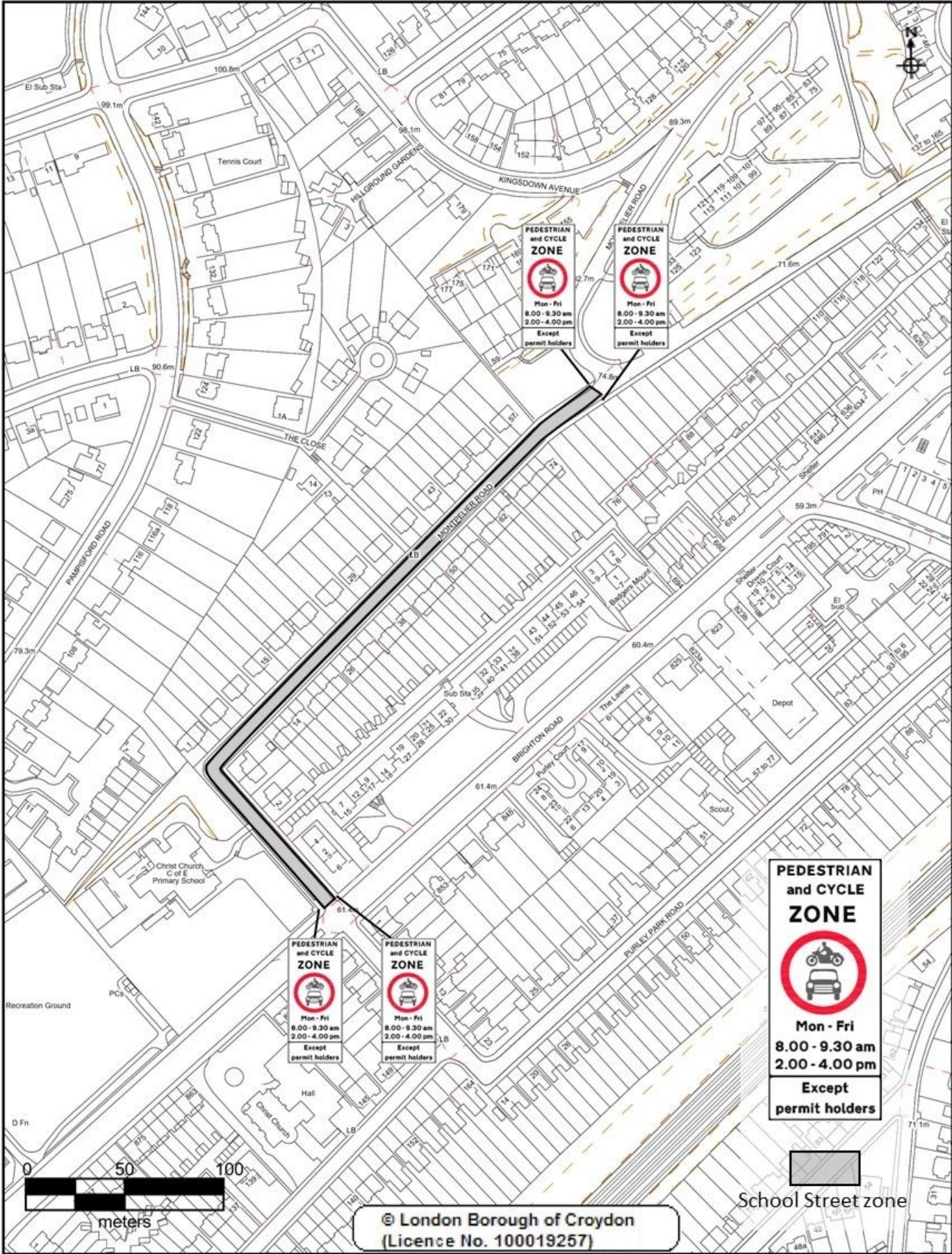
- 1) **Online:** submit your response by visiting the following webpage www.getinvolved.croydon.gov.uk/schoolstreets and select the relevant online form that applies to this scheme.
- 2) **Email:** submit your objection via email to montpelier.schoolstreet@croydon.gov.uk

Please ensure that you insert the reference **MONTPELIER/2022** in the subject line.

- 3) **Post:** send your objection quoting the reference **MONTPELIER/2022** to the following address to reach us by **25 October 2022**: Order Making Section (MONTPLIER/2022), Parking Design Team, Sustainable Communities, Regeneration & Economic Recovery, Croydon Council, Bernard Weatherill House, 8 Mint Walk Croydon CR0 1EA

At the end of the experimental period, the council will review all the objections received together with its own assessment on how the scheme has performed and will take a decision on whether the experimental scheme be removed or be made permanent.

For further information on the council's Healthy School Streets programme please visit www.croydon.gov.uk/schoolstreets



© London Borough of Croydon
(Licence No. 100019257)

School Street zone

